

Musical MIDI Accompaniment



Chord Reference Manual

This document was prepared from version 15.01 of MMA.

Bob van der Poel
Wynndel, BC, Canada

bob@mellowood.ca

January 27, 2015

Chapter 1

Chord Reference

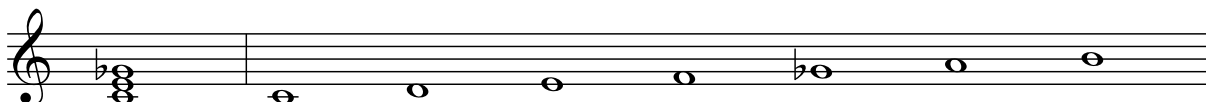
This document is a reference to the chords and scales use in *MtA*. It has been generated directly from the module `chordtable.py` in the *MtA* sources. Each section shows the chord name, a brief description, the chord notes for a “C” chord, and the associated scale tones. These chords and scales are used in *MtA* to generate chords, bass, arpeggios, arias, harmonies and scales.

In all cases you will need to preface the name with a chord pitch. For example, the reference for an 11th chord is listed simply as “11”; you would use a “C11” or “Eb11”, etc. in your *MtA* source file. Read the *MtA* Reference Guide if you don’t understand this.

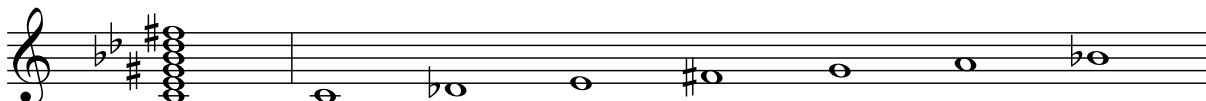
This document was prepared as a reference to verify the correctness of the chords and scales used in *MtA*. If you find an error, please let the author know.

MtA defines 92 unique chords plus 61 aliases. Chords used in *MtA* via aliased names are listed after the main name.

(b5) — Major triad with flat 5th.



+7b9#11 — Augmented 7th with flat 9th and sharp 11th.



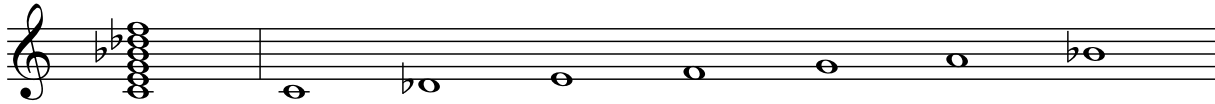
11 — 9th chord plus 11th (3rd not voiced).



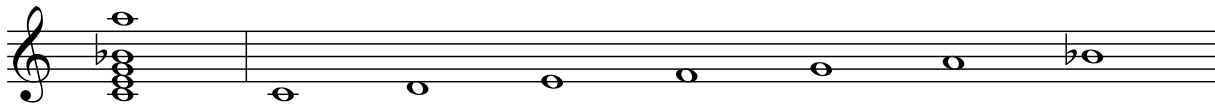
11+, 11 \sharp 5 — Augmented 11th (sharp 5).



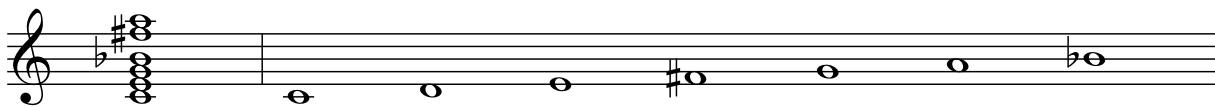
11 \flat 9 — 7th chord plus flat 9th and 11th.



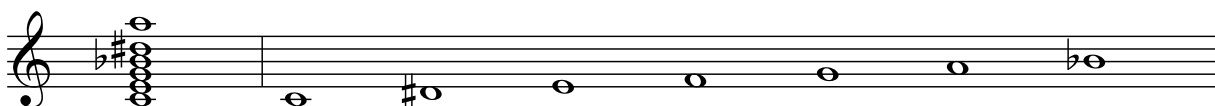
13 — 7th (including 5th) plus 13th (the 9th and 11th are not voiced).



13 \sharp 11 — 7th plus sharp 11th and 13th (9th not voiced).



13 \sharp 9 — 7th (including 5th) plus 13th and sharp 9th (11th not voiced).



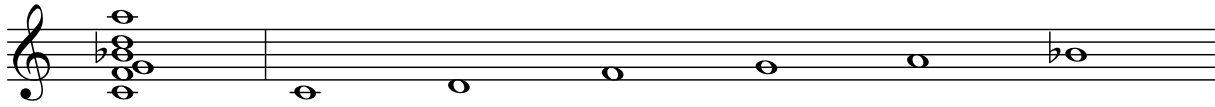
13 \flat 5 — 7th with flat 5th, plus 13th (the 9th and 11th are not voiced).



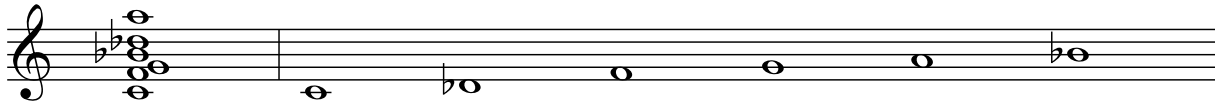
13 \flat 9, M7(add13) — 7th (including 5th) plus 13th and flat 9th (11th not voiced).



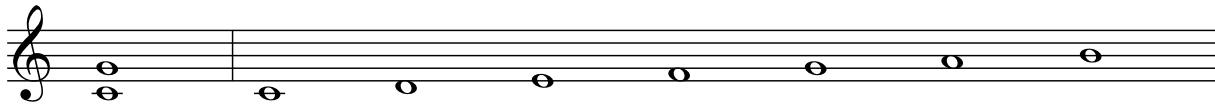
13sus — 7sus, plus 9th and 13th



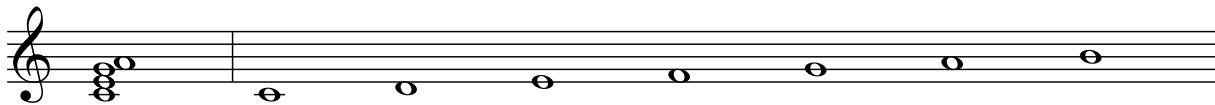
13sus \flat 9 — 7sus, plus flat 9th and 13th



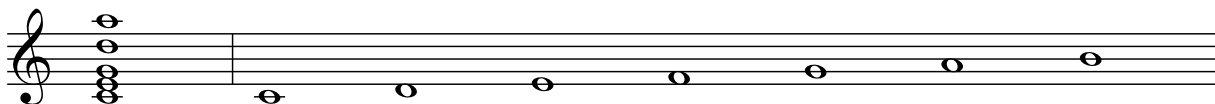
5 — Altered Fifth or Power Chord; root and 5th only.



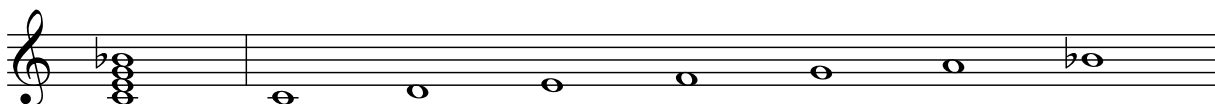
6, M6 — Major triad with added 6th.



6(add9), 69 — 6th with added 9th. This is sometimes notated as a slash chord in the form “6/9”.



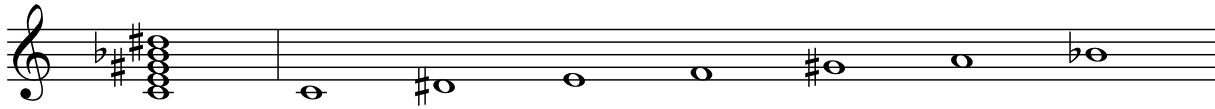
7 — 7th.



7 \sharp 11 — 7th plus sharp 11th (9th omitted).



7 \sharp 5 \sharp 9 — 7th with sharp 5th and sharp 9th.



7 \sharp 9, 7+9 — 7th with sharp 9th.



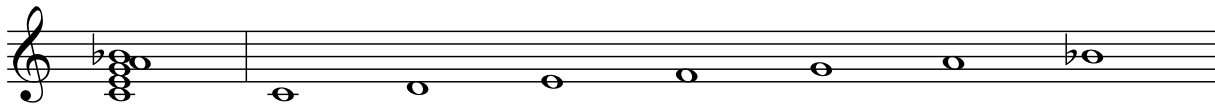
7 \sharp 9 \sharp 11 — 7th plus sharp 9th and sharp 11th.



7 \sharp 9 \flat 13 — 7th with sharp 9th and flat 13th.



7(6) — 7th with added 6th.



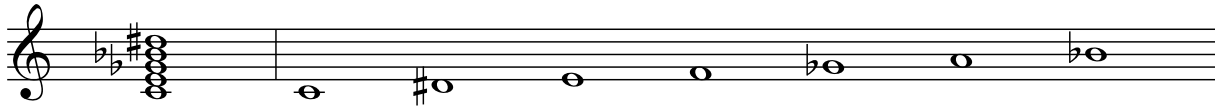
7 \flat 13 — 7th (including 5th) plus flat 13th (the 9th and 11th are not voiced).



7 \flat 5, 7-5 — 7th, flat 5.



7 \flat 5 \sharp 9 — 7th with flat 5th and sharp 9th.



7 \flat 5 \flat 9, 7alt — 7th with flat 5th and flat 9th.



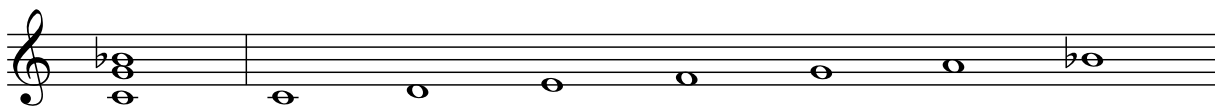
7 \flat 9, 7-9 — 7th with flat 9th.



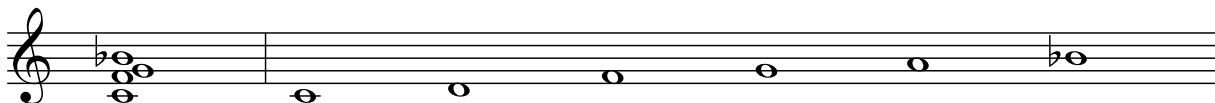
7 \flat 9 \sharp 11 — 7th plus flat 9th and sharp 11th.



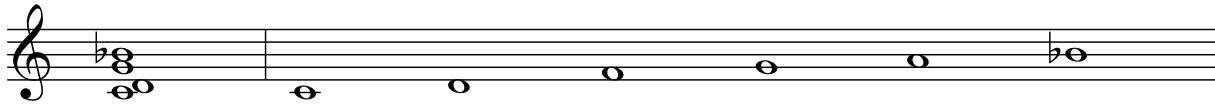
7omit3, 7(omit3) — 7th with unvoiced 3rd.



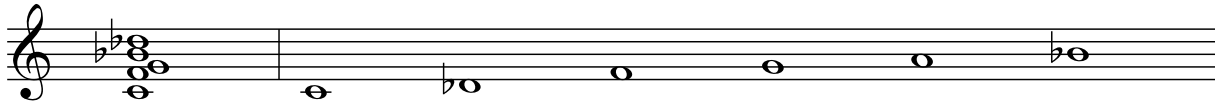
7sus, 7sus4 — 7th with suspended 4th, dominant 7th with 3rd raised half tone.



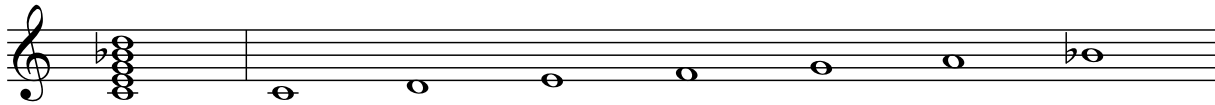
7sus2 — A sus2 with dominant 7th added.



7susb9, 7b9sus — 7th with suspended 4th and flat 9th.



9 — 7th plus 9th.



9#11 — 7th plus 9th and sharp 11th.



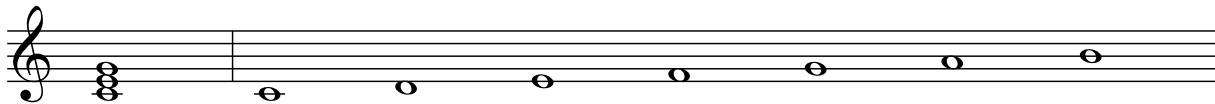
9#5, aug9, 9+, +9, 9+5 — 7th plus 9th with sharp 5th (same as aug9).



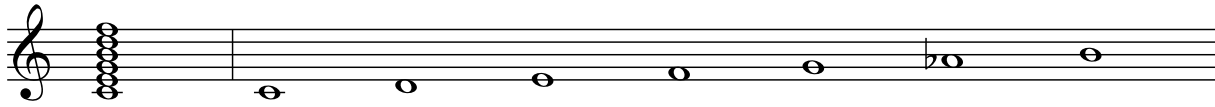
9b5, 9-5 — 7th plus 9th with flat 5th.



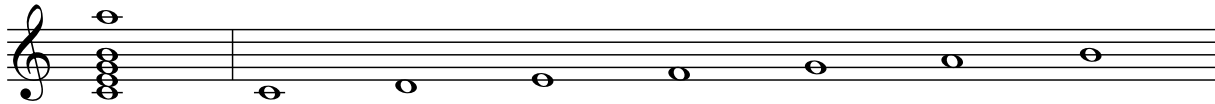
M — Major triad. This is the default and is used in the absence of any other chord type specification.



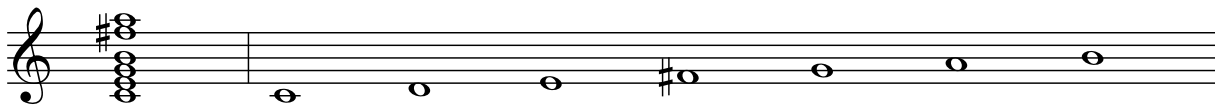
M11 — Major 9th plus 11th.



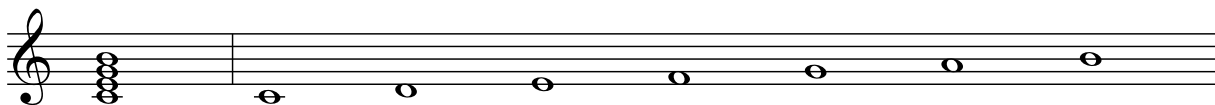
M13, maj13 — Major 7th (including 5th) plus 13th (9th and 11th not voiced).



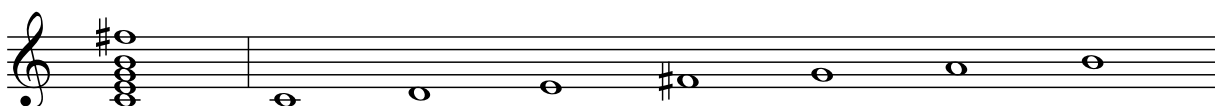
M13#11 — Major 7th plus sharp 11th and 13th (9th not voiced).



M7, maj7 — Major 7th.



M7#11 — Major 7th plus sharp 11th (9th omitted).



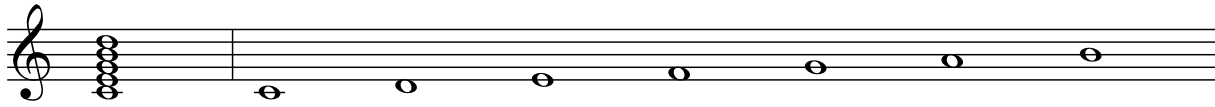
M7#5, +M7, M7+5 — Major 7th with sharp 5th.



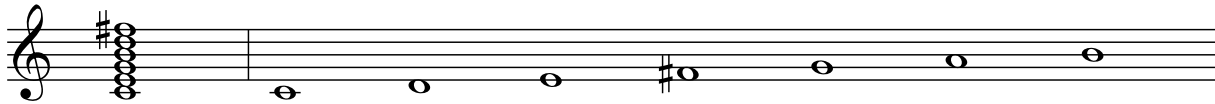
M7b5, M7-5 — Major 7th with a flat 5th.



M9, maj9 — Major 7th plus 9th.



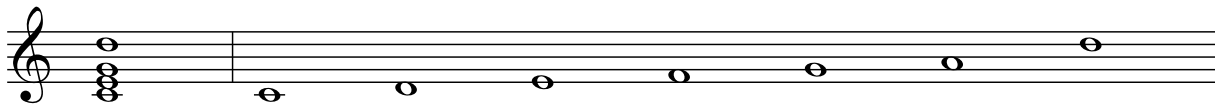
M9#11 — Major 9th plus sharp 11th.



add#9, (add#9) — Major chord plus sharp 9th (no 7th.)



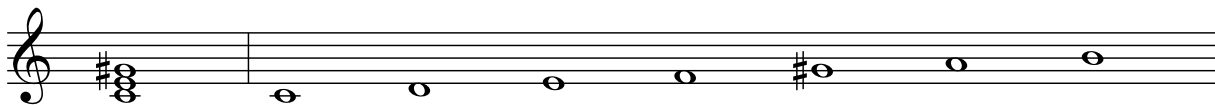
add9, (add9) — Major chord plus 9th (no 7th.)



addb9, (addb9) — Major chord plus flat 9th (no 7th.)



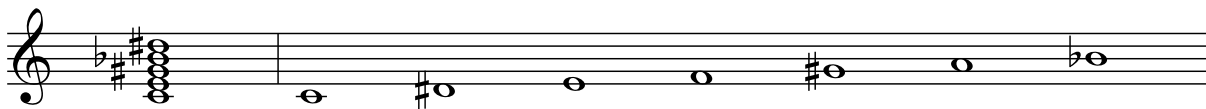
aug, +, #5 — Augmented triad.



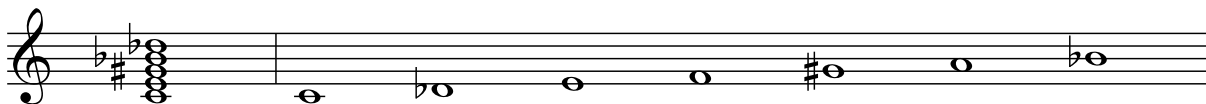
aug7, +7, 7+, 7#5, 7+5 — An augmented chord (raised 5th) with a dominant 7th.



aug7 \sharp 9, +7 \sharp 9 — An augmented chord (raised 5th) with a dominant 7th and sharp 9th.



aug7 \flat 9, +7 \flat 9, 7 \sharp 5 \flat 9 — An augmented chord (raised 5th) with a dominant 7th and flat 9th.



aug9M7, +9M7 — An augmented chord (raised 5th) with a major 7th and 9th.



dim7, dim, \circ — Diminished seventh.



dim7(addM7), \circ (addM7) — Diminished triad with added Major 7th.



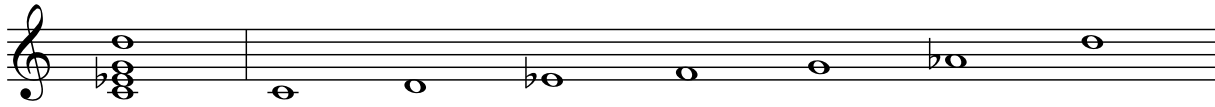
m — Minor triad.



m \sharp 5, m+5, m+ — Minor triad with augmented 5th.



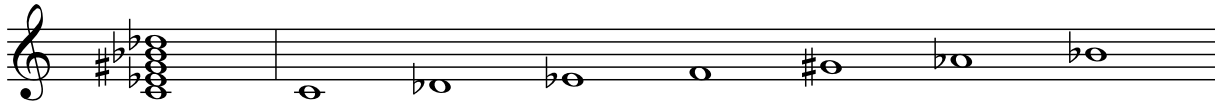
m(sus9), m(add9) — Minor triad plus 9th (no 7th).



m+7#9 — Augmented minor 7 plus sharp 9th.



m+7b9 — Augmented minor 7 plus flat 9th.



m+7b9#11 — Augmented minor 7th with flat 9th and sharp 11th.



m11 — 9th with minor 3rd, plus 11th.



m11b5 — Minor 7th with flat 5th plus 11th.



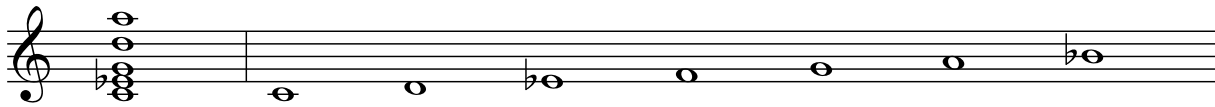
m13 — Minor 7th (including 5th) plus 13th (9th and 11th not voiced).



m6 — Minor 6th (flat 3rd plus a 6th).



m6(add9), m69 — Minor 6th with added 9th. This is sometimes notated as a slash chord in the form “m6/9”.



m7 — Minor 7th (flat 3rd plus dominant 7th).



m7#5 — Minor 7th with sharp 5th.



m7#9, m7(♯9) — Minor 7th with added sharp 9th.



m7(add11) — Minor 7th plus 11th.



m7(add13) — Minor 7th plus 13th.



m7 \flat 5, m7-5, \emptyset — Minor 7th, flat 5 (aka 1/2 diminished).



m7 \flat 5 \flat 9 — Minor 7th with flat 5th and flat 9th.



m7 \flat 9, m7(\flat 9) — Minor 7th with added flat 9th.



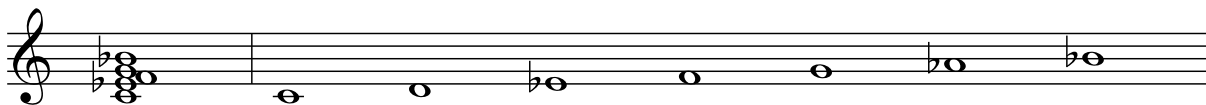
m7 \flat 9 \sharp 11 — Minor 7th plus flat 9th and sharp 11th.



m7omit5, m7(omit5) — Minor 7th with unvoiced 5th.



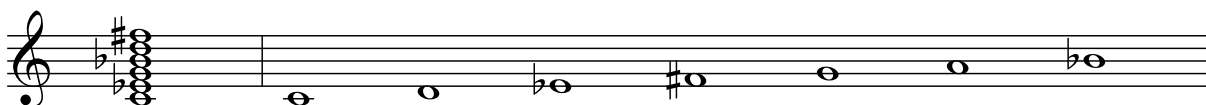
m7sus4, m7sus — Minor suspended 4th, minor triad plus 4th and dominant 7th.



m9 — Minor triad plus 7th and 9th.



m9#11 — Minor 7th plus 9th and sharp 11th.



m9b5 — Minor triad, flat 5, plus 7th and 9th.



mM7, m(maj7), m+7, min(maj7), min#7, m#7 — Minor Triad plus Major 7th. You will also see this printed as “m(maj7)”, “m+7”, “min(maj7)” and “min#7” (which *MuA* accepts); as well as the *MuA* invalid forms: “-(Δ7)”, and “minb7”.



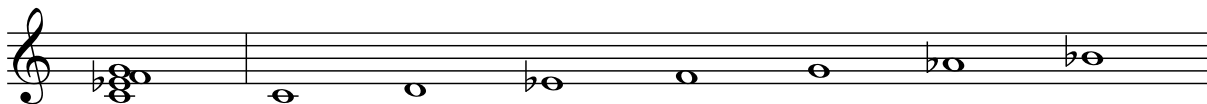
mM7(add9) — Minor Triad plus Major 7th and 9th.



m \flat 5, m(\flat 5), $^{\circ}$ 3, dim3 — Minor triad with flat 5th (aka dim).



msus4, msus — Minor suspended 4th, minor triad plus 4th.



omit3add9, omit3(add9) — Triad: root, 5th and 9th.



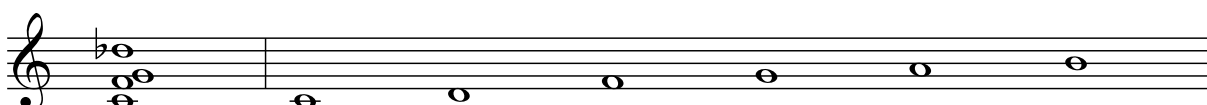
sus(add \sharp 9) — Suspended 4th, major triad with the 3rd raised half tone plus sharp 9th.



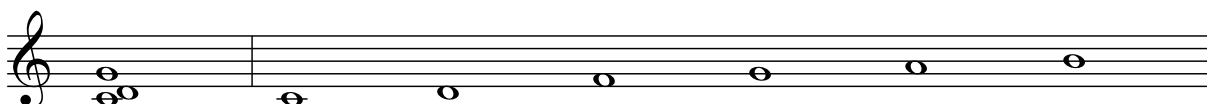
sus(add9) — Suspended 4th, major triad with the 3rd raised half tone plus 9th.



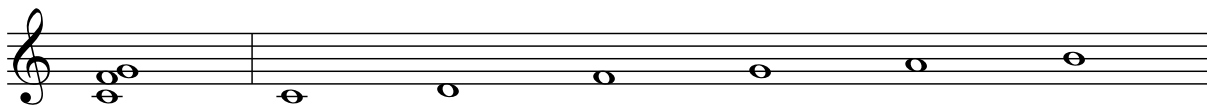
sus(add \flat 9) — Suspended 4th, major triad with the 3rd raised half tone plus flat 9th.



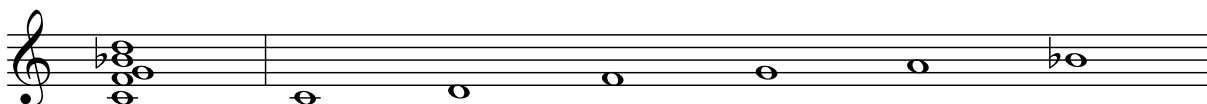
sus2 — Suspended 2nd, major triad with the major 2nd above the root substituted for 3rd.



sus4, sus — Suspended 4th, major triad with the 3rd raised half tone.



sus9, 9sus, 9sus4 — 7sus plus 9th.



Index of Chords

#5 9	7b5#9 6	M11 8	m#7 14
(b5) 2	7b9 6	M13 8	m(b5) 15
(addb9) 9	7b9#11 6	M13#11 8	m(add9) 11
(add#9) 9	7b9sus 7	M6 4	m(maj7) 14
(add9) 9	7#11 4	M7 8	m(sus9) 11
+7b9#11 2	7#5b9 10	M7b5 8	m+5 10
+7b9 10	7#5#9 5	M7#11 8	m+7b9 11
+7#9 10	7#5 9	M7#5 8	m+7b9#11 11
+7 9	7#9 5	M7(add13) 3	m+7#9 11
+9M7 10	7#9b13 5	M7+5 8	m+7 14
+9 7	7#9#11 5	M7-5 8	m+ 10
+M7 8	7(6) 5	M9 9	m11 11
+ 9	7(omit3) 6	M9#11 9	m11b5 11
11 2	7+5 9	ø 13	m13 11
11b9 3	7+9 5	°(addM7) 10	m6 12
11#5 3	7+ 9	°3 15	m6(add9) 12
11+ 3	7-5 5	° 10	m69 12
13 3	7-9 6		m7 12
13b5 3	7alt 6	addb9 9	m7b5 13
13b9 3	7omit3 6	add#9 9	m7b5b9 13
13#11 3	7sus 6	add9 9	m7b9 13
13#9 3	7susb9 7	aug 9	m7b9#11 13
13sus 4	7sus2 7	aug7 9	m7#5 12
13susb9 4	7sus4 6	aug7b9 10	m7#9 12
5 4	9 7	aug7#9 10	m7(b9) 13
6 4	9b5 7	aug9M7 10	m7(#9) 12
6(add9) 4	9#11 7	aug9 7	m7(add11) 12
69 4	9#5 7		m7(add13) 13
7 4	9+5 7	dim3 15	m7(omit5) 13
7b13 5	9+ 7	dim7 10	m7-5 13
7b5 5	9-5 7	dim7(addM7) 10	m7omit5 13
7b5b9 6	9sus4 16	dim 10	m7sus4 14
	9sus 16	m 10	m7sus 14
	M 7	mb5 15	m9 14
		m#5 10	m9b5 14

m9#11	14	min#7	14	omit3add9 ...	15	sus4	16
mM7	14	min(maj7)	14	sus(addb9) ...	15	sus9	16
mM7(add9) ..	14	msus4	15	sus(add#9) ...	15	sus	16
maj13	8	msus	15	sus(add9)	15		
maj7	8	omit3(add9) ..	15	sus2	15		
maj9	9						